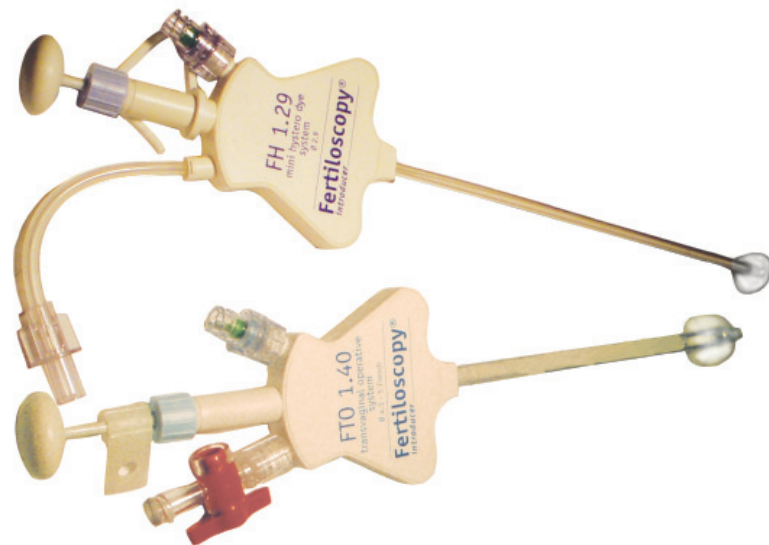




# FertiloScope™

## Manage physical causes of infertility

The FertiloScope™ provides gold standard diagnostic accuracy\* and extensive treatment options in a day-case setting.



- A 20 minute visit for a complete assessment of female infertility including hysteroscopy
- Saves time and money for the clinician and the patient
- See more patients sooner by offering a potentially reduced time to pregnancy#
- Uncomplicated, and safely used in over 6,000 patients to date

*fertility focus*



# fertility focus

the future of infertility management  
more pregnancies, for  
lower cost, in  
less time

## Diagnosis

- blocked tubes
- damaged tubal mucosa
- adhesions
- endometriosis
- intrauterine lesions

### Equivalence with gold standard of Lap and Dye\*

Watrelot A, Nisolle M, Chelli H, Hocke C, Rongieres C, Racinet C;  
International Group for Fertiloscopy Evaluation. Centre de Recherche et  
d'Étude de la Sterilite, 69003-Lyon, France. Human Reproduction, Vol 18,  
No. 4, 834-839, April 2003

### Place of transvaginal fertiloscopy in the management of tubal factor disease#

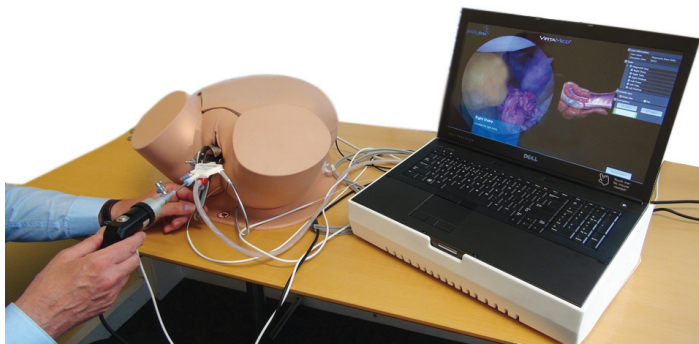
Watrelot A. Centre de Recherche et d'Étude de la Sterilite, 69003-Lyon,  
France. RBM Online, Vol 15, No. 4, 389-395, June 2007

## Treatment

The FertiloScope enables ovarian drilling for  
PCOS and correction of minor adhesions and  
endometriosis, as well as hysteroscopic procedures.

## Training

Fertility Focus provides an advanced programme  
of simulator and live based training through our  
approved partners. The FertiloSim is available on  
request for seminars and residency courses.



Each FertiloScope kit comprises:

FH 1.29	2.9mm Uterine introducer with hystero-dye channel, and balloon inflation channel
FTO 1.40	Transvaginal introducer for Pouch of-Douglas with 3 channels: <ul style="list-style-type: none"><li>• 4mm scope channel with sharp mandrel</li><li>• balloon inflation channel</li><li>• 5-French (1.5mm) operative channel</li></ul>

FertiloScope™ and the Fertility Focus logo are trade marks of Fertility Focus Ltd. CAUTION: Federal law restricts this device to sale by or on the order of a physician.

Fertility Focus reserves the right to change product specification without notice, in line with our policy of constant product improvement.

Part number: F001-24JUN13-V2.2-EN

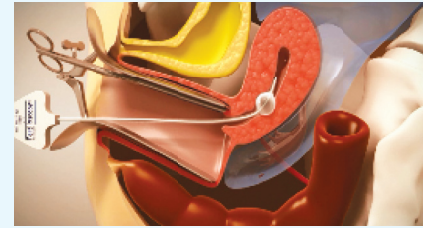
Copyright © 2013 Fertility Focus Ltd. All rights reserved.

CE 0088

## Procedure

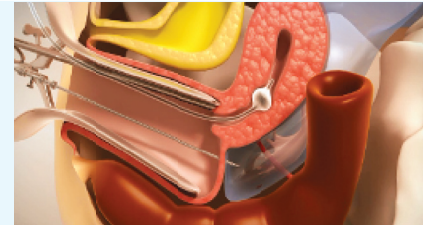
### Introduction of FH 1.29

- A. Attachment of Pozzi forceps (at 8 o'clock) to the cervix, Traction
- B. Introduction of the uterine catheter



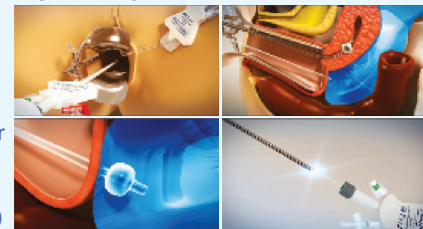
### Introduction of Veres Needle

- FH 1.29 rigid inserter removed, Balloon filled with 3cc air
- Veres needle inserted into Pouch of Douglas, 200cc saline is instilled



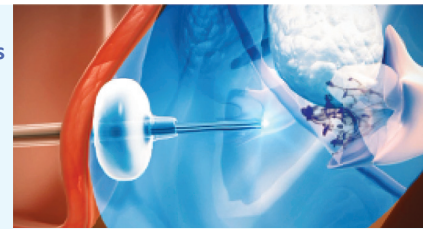
### Introduction of FTO 1.40 and Hysteroscope

- FTO 1.40 transvaginal cannula is introduced instead of the Veres
- Rigid inserter removed
- Balloon filled with 5cc air
- Hysteroscope with irrigation sheath introduced into FTO 1.40



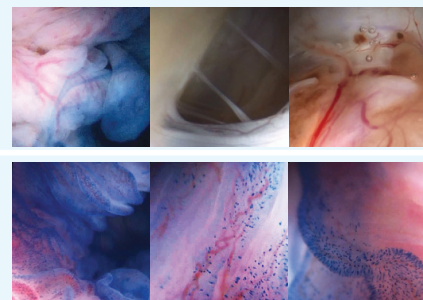
### Diagnosis: Tubal Patency, Adhesions & Endometriosis

- Dye introduced
- Using balloon to pull back against the Pouch of Douglas wall
- Scope can be used to view patency and lesions



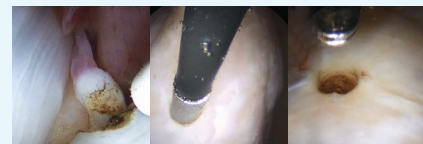
### Diagnosis: Salpingoscopy

- Scope can be used to examine the state of the tubal folds, and
- Detail of tubal mucosa



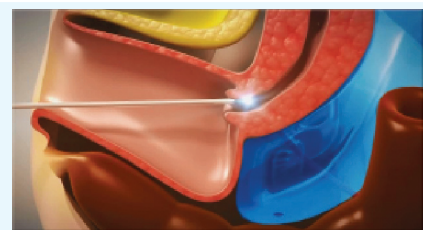
### Treatment

- 5-French operative channel can be used for
- Adhesiolysis
- Ovarian Drilling



### Hysteroscopy

- FTO 1.40 is then removed
- FH 1.29 is removed
- Hysteroscopy is performed using Hysteroscope with irrigation sheath



a Fertility Focus  
Unit 19D, Warwick Innovation Centre,  
Warwick Technology Park, Gallows Hill,  
Warwick, CV34 6UW, UK  
e info@fertility-focus.com  
w www.fertility-focus.com  
t +44 (0)1926 400054

fertility focus